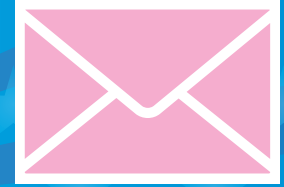




PROVISIONAL BALLOTS FINAL COUNTS



The Los Angeles County Registrar-Recorder/County Clerk received 271,318 provisional ballots for the June 7th Presidential Primary Election. During the official canvass period, these provisional ballots were verified and validated to ensure that each voter was eligible to vote in this election.

Throughout this process, 236,788 provisional ballots were approved and subsequently counted. The remaining 34,530 provisional ballots were rejected for various reasons noted below. The number counted made up 87% of the total provisional ballots received, which is in line with the Department's historical average.

YES COUNT

236,788

NO COUNT

Voter returned a Vote by Mail ballot that was already counted.	1,998
Voter signature did not match the voter registration application.	2,958
Voter was not registered to vote in this election.	17,769
Voter registered to vote after the close of registration.	2,583
Voter did not provide an address on the provisional envelope.	225
Voter did not sign the provisional envelope or the roster of voters.	869
Voter has an incomplete voter registration application.	1,445
Voter provided a provisional envelope that was not complete.	4,869
Voter provided an Out of County address on the provisional envelope.	1,683
Voter became a new citizen after the close of registration and did not vote at Registrar-Recorder/County Clerk Headquarters as required by law.	131

TOTAL

34,530